

## The rail solution

The rail is the surface on which cranes and other material handling machines operate. Therefore, it is a fundamental element of the structure.

**GANTRY** selects the rail (profile, length, quality, ...) according to your specific requirements, using the experience of its internal Technical Department.

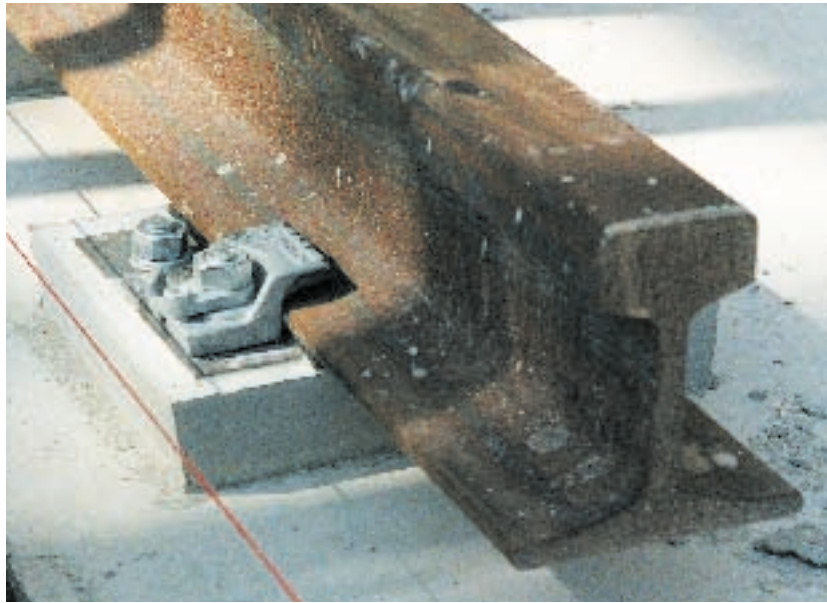
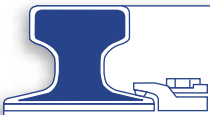


The rail selection must satisfy the following criteria :

- reliability,
- economy,
- and life expectancy.

**GANTRY** is the ideal partner, to assist when considering your rail selection.





**GANTRY** can suggest the optimum rail type, whether it is a low profile crane rail or the higher profile Vignole type, directly supplied from the best rolling mills worldwide.

**GANTRY** also has a specialised machining workshop, and hold stock of the most common rail profiles.

We can certify the quality of our products, and that they are supplied in accordance with the various international standards matching your needs.



For more information, please consult us.  
Technical specification sheets, per rail profile, available on request.

*We reserve the right to discontinue or change specifications or design at any time without prior notice and without incurring any obligation whatsoever.*

**GANTRY MIDDLE EAST Ltd**

P.O.B. 1022 - Fujairah - U.A.E. • Tel. +971(0)9 222 89 00 • Fax +971(0)9 222 89 01

E-mail : [gantry@me.gantry.com](mailto:gantry@me.gantry.com) - <http://www.gantry.com>

Member of the  
**GANTRY**  
Group

